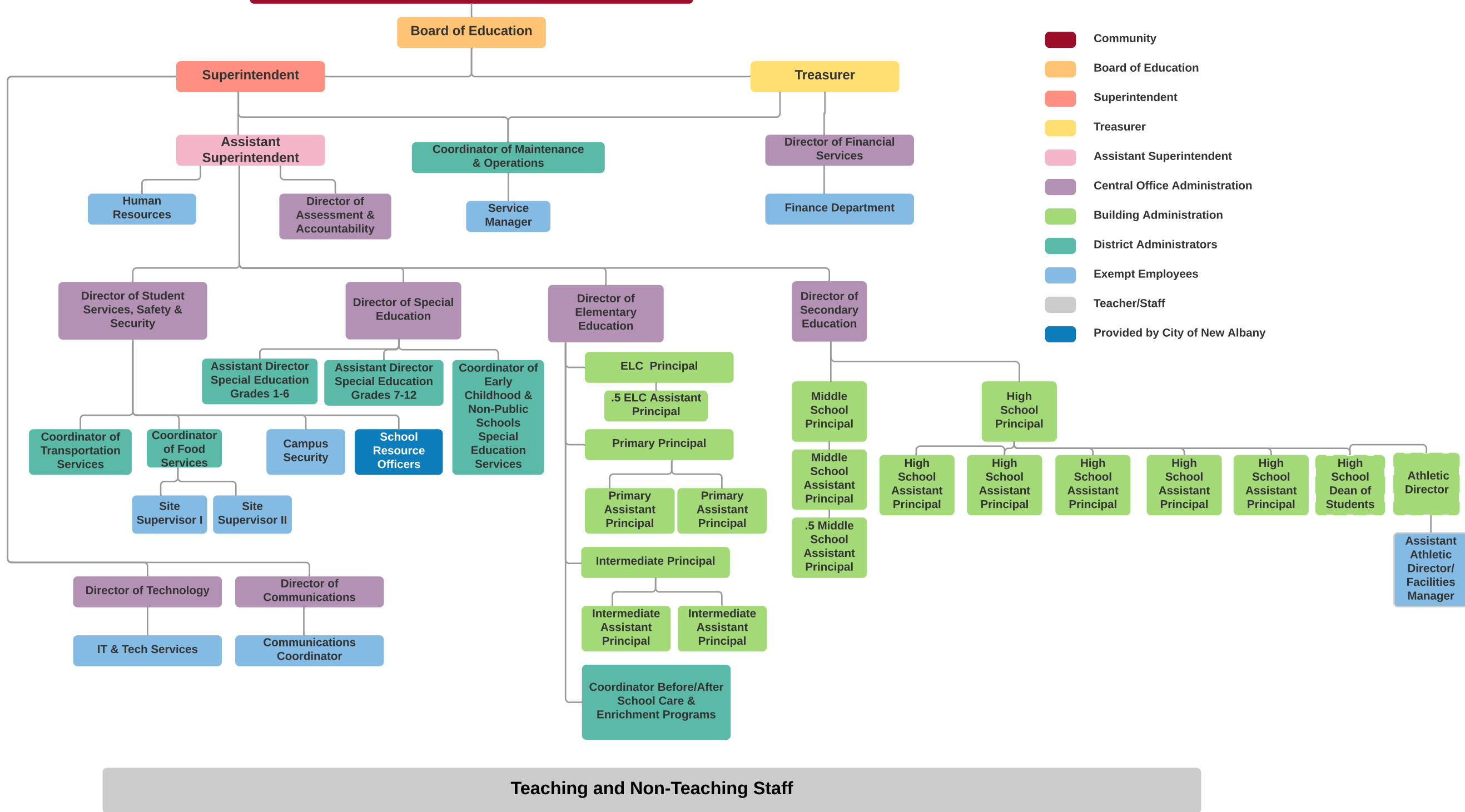


Community, Parents/Guardians, Students

New Albany-Plain Local Schools 2021-2022 Organizational Chart



- Community
- Board of Education
- Superintendent
- Treasurer
- Assistant Superintendent
- Central Office Administration
- Building Administration
- District Administrators
- Exempt Employees
- Teacher/Staff
- Provided by City of New Albany

Teaching and Non-Teaching Staff